

Rev A list of changes

- Reduction in bedroom size in the 1b1p units.
- Addition of 750mm zone around beds in 1b2p central block units.
- Boundary treatment to ground floor duplexes on Trinity Road reduced from 1.5m height to 1.2m.
- Ground floor duplex gardens/bins store reconfiguration.
- Additional side door from servicing corridor to central commercial unit.
- Amendments to the enlarged cycle parking spaces to provide a secured and lockable store.
- Short stay cycle parking relocated from Trinity Road to central piazza.
- Provision of clear link from service yard to residential concierge lobby.
- Windows in YMCA amended to show perforated panels to avoid overlooking.
- Screen aligned with vertical mullions in central block façade facing The Broadway.



REVISIONS

No.	DESCRIPTION	DATE
A	Planning Revision	11/11/20 AC AC

BLOCK A

A1_Aluminium - White aluminium vertical fins

BLOCK B

B1_Brick - Dark Green brickwork (225x75x102.5mm)
B2_Precast concrete - Light cream precast concrete panel with engraved triangular pattern

BLOCK C

C1_Brick - Salmon brickwork (225x75x102.5mm)
C2_Precast concrete - Light salmon precast concrete panel with engraved triangular pattern
C3_Aluminium rainscreen cladding - Light salmon solid aluminium rainscreen cladding
C4_Aluminium rainscreen cladding - Dark salmon solid aluminium rainscreen cladding

BLOCK D

D1_Brick - Brown brickwork (225x75x102.5mm)
D2_Precast concrete - Light brown precast concrete panel with engraved triangular pattern
D3_Aluminium rainscreen cladding - Light brown solid aluminium rainscreen cladding
D4_Aluminium rainscreen cladding - Dark brown solid aluminium rainscreen cladding

BLOCK E

E1_Brick - Light grey brickwork (225x75x102.5mm)
E2_Precast concrete - Light grey precast concrete panel with engraved triangular pattern
E3_Aluminium rainscreen cladding - Light grey solid aluminium rainscreen cladding
E4_Aluminium rainscreen cladding - Grey solid aluminium rainscreen cladding

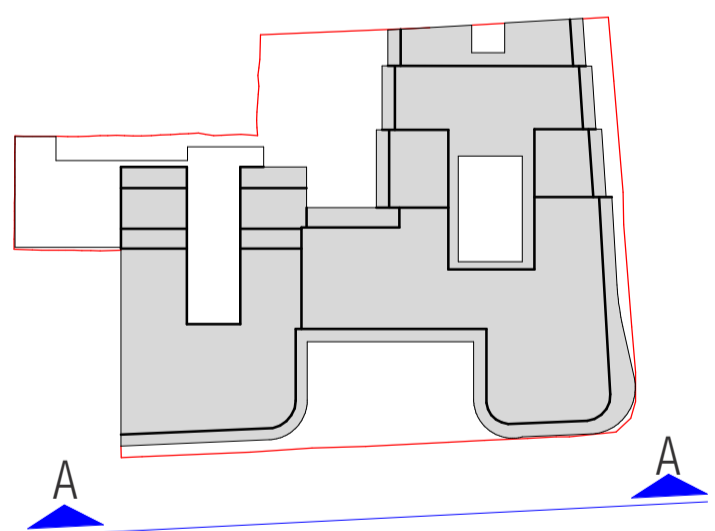
YMCA

Y1_Brick - Red brickwork (225x75x102.5mm)
Y2_Precast concrete - Dark red precast concrete panel with engraved triangular pattern
Y3_Precast concrete - Red precast concrete
Y4_Aluminium rainscreen cladding - Red solid aluminium rainscreen cladding
Y5_Aluminium rainscreen cladding - Light red solid aluminium rainscreen cladding
Y6_Aluminium rainscreen cladding - Light brown perforated aluminium rainscreen cladding with laser cut triangular pattern
Y7_Cill-Red concrete
Y8_Light brown aluminium planters

Generic

G1_Bronze aluminium window frame
G2_Metal vertical railings - Bronze metal vertical railings (25x25mm)
G3_Metal vertical railings - Bronze metal vertical railings (25x120mm)
G4_Bronze aluminium horizontal fins
G5_Bronze aluminium signage
G6_White neon signage
G7_Glass- Obscure glazing rainscreen cladding
G8_Composite infill panel (External opaque glass)
G9_Aluminium-Brown solid aluminium rainscreen cladding
G10_Aluminium -Light Brown solid aluminium rainscreen cladding
G11_Aluminium -Light grey solid aluminium rainscreen cladding
G12_Aluminium - Golden solid aluminium rainscreen cladding
G13_Aluminium - Light cream solid aluminium rainscreen cladding
G14_Precast concrete - Light cream precast concrete
G15_Cill-White concrete
G16_Brick - Cream brickwork (225x75x102.5mm)

Not for construction. All drawings are issued for information purposes only and subject to site survey, further design development, detailed design and building control approval and other statutory approvals. Drawings do not imply confirmation of legal boundaries or Title.

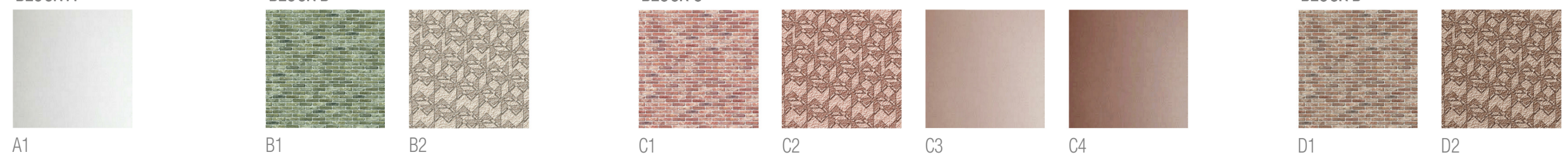


Elevation A-A

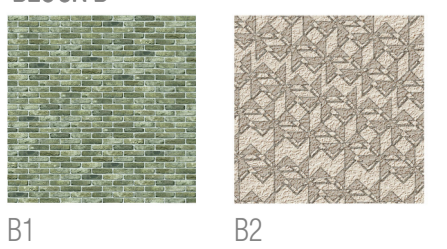
1 : 100



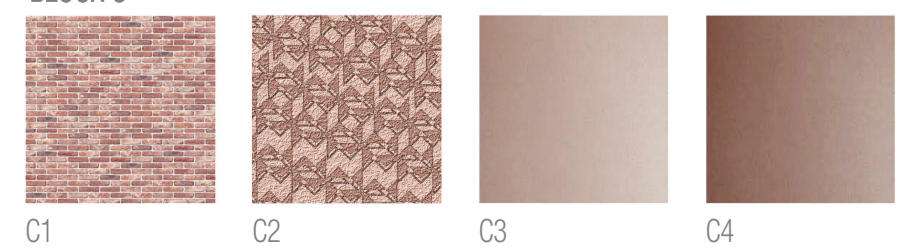
BLOCK A



BLOCK B



BLOCK C



BLOCK D



BLOCK E



YMCA



ARCHITECTURE

1 Nacroji Street | Clerkenwell | London | WC1X 0GB
0207 553 3030 www.dla-design.co.uk

PROJECT
200 THE BROADWAY, YMCA
LONDON, SW19 1RY

TITLE
A-A Elevation

SCALE
As indicated @ A1

DATE
02/26/20

DLA REF
2018-211

DRAWN
TM

REVIEWED
AC

DRAWING NAME
PROJECT ORIGINATOR
YMCA DLA

ZONE LEVEL TYPE ROLE NUMBER
XX DR A 260

STATUS
SUITABILITY DESCRIPTION
FOR PLANNING

REVISION
A

REVISION DESCRIPTION

Approved 188-194 The Broadway

This page is intentionally left blank